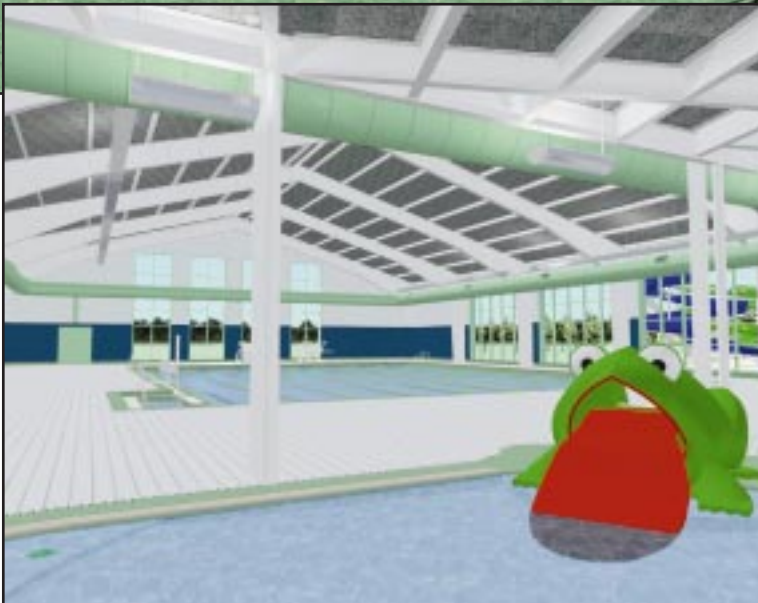




LORAIN
COUNTY
METRO
PARKS

2001 ANNUAL REPORT TO THE CITIZENS OF LORAIN COUNTY

LORAIN COUNTY METRO PARKS
A Park for All Seasons



**LORAIN COUNTY
METRO PARKS
NEW AQUATIC
CENTER**

GRANTS AND DONATIONS

The citizens, businesses and foundations of Lorain County were very generous to the Park District in 2001. Detailed below are the most significant contributions:

Amherst Park Fund.....	\$26,380
General Donations and Memorial Gifts.....	\$71,110
Koppenhafer Bequest.....	\$38,092
Regional Aquatic Center.....	\$1,850,940
Sponsorship and Exhibit Donations.....	\$34,152

PARK PROGRAMS

The Lorain County Metro Parks' 8th annual major exhibit was called "The World of the Mammoth" and was sponsored by Mike Bass Ford and CenturyTel. Over 38,000 people enjoyed the recreated "Woolly Mammoth".

In addition, the Metro Parks' naturalist staff conducted 774 requested programs and 623 public programs with over 44,000 people in attendance.

METRO PARKS VISITOR AND PROGRAM ATTENDANCE

Golf Rounds.....	31,226	Public Programs (623).....	19,053
Major Exhibit.....	38,912	Senior Citizen Bus Tours (115).....	2,572
Requested Programs (774).....	25,467		

PARK DAY-USE VISITORS

Amherst.....	69,000	French Creek Picnic Area.....	63,529
Ball Diamonds.....	14,705	High Meadows	127,842
Bikeway.....	122,500	Horse Trails.....	51,200
Bur Oak.....	151,068	Indian Hollow.....	30,591
Caley.....	10,063	Mill Hollow.....	198,896
Carlisle Reservation	55,651	Sandy Ridge.....	62,202
Day's Dam.....	124,829	Schoepfle Garden.....	59,767
Duck Pond Picnic Area.....	62,598		
French Creek Nature Center.....	46,732	TOTAL.....	1,251,173



